



ComNav®

M10 MARINE DGPS CHART PLOTTER

10.1" Touch Screen Multi-Function Display

FEATURES



GNSS

Using the ephemeris combined with histogram to show the GNSS satellite situation and signal strength. It supports GPS and BDS positioning system running together to improve the accuracy.



DIGITAL REPEATER DIAL

The new digital repeater dial provides an easy to read and visualizable image for HDT, COG, SOG, BRG, RNG, Longitude, Latitude, XTE, ETA, DPT, TEMP, Wind and Date.

MULTI CHART APP

Supports the chart format of C-MAP(Max), S57, S63, CJ57 CJ63



M10 SPECIFICATION

Model	Serials
Operation System	Android 5.1 with OpenGL ES 3.0 & OpenCL 1.1
CPU	Cortex-A17 Quad core
CPU Speed	1.8GHz 32 Bit
RAM	2GB DDR3 1333MHz
Flash Memory	16GB Flash Memory
Video Engine	Mali-T764
Keyboard	1 Knob Encoder and 9 Function Keys
Touch Panel	Capacitive Multi-touch Screen
Size	10.1 Inch
Brightness	800 cd/m ² (Max)
Viewing Angle	Capacitive Multi-touch Screen
Resolution	1280 x 800
Power Voltage	DC 10V-36V
Power Consumption	14W or less (24 VDC)
Audio	1W
Micro SD Card Slot	Support Two 128G High Speed micro-SD Card
GNSS	
GNSS Receiver	32 channels
Receive Frequency	L1,1575.42MHz; B1,1561.098MHz
Accuracy	GPS&BDS 2.5m (CEP50% open sky)
	GPS 3m (CEP50% open sky)
	BDS 5m (CEP50% open sky)
Speed Accuracy	0.1m/s (50%@10m/s)
Time to First Fix	Cold Start: <32s、Hot Start: <1s
Coordinate Systems	WGS-84 (and others)

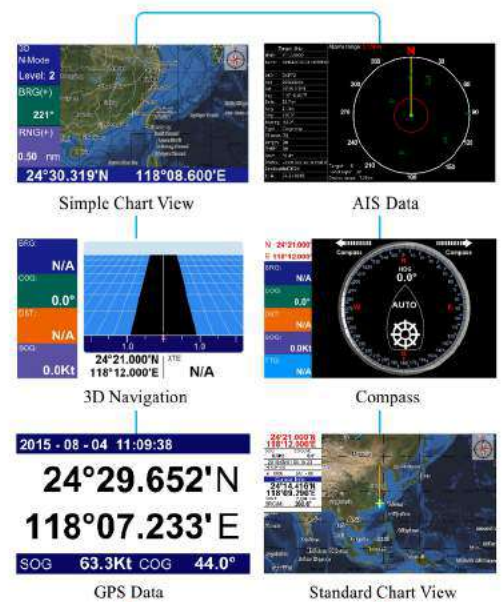
Model	Serials
Bluetooth	BT4.0
WiFi	802.11 b/g/n
4G Module	LTE/WCDMA/GSM Internal/External Antenna Switch
Camera	8 Million Pixels
Lan Net work	1000Mbps
Input	2 NMEA0183 Input, 1 NMEA0183 can be set as Input or Output. All are with Independent Baud rate. Video Input: 2 CVBS PAL/NTSC and 4 webcam
Output	1 NMEA 0183 output; 1 NMEA0183 can be set as input or output. 1080P HDMI, support copy screen and extend screen.1 Audio output; 1 Alarm output .
NMEA-2000	Support
Operating Temperature	-15°C~+55°C
Standard	IEC-60945 , IEC-62287-1 , IEC-61108-1

AIS Class B	
Frequency	156.025 ~ 162.025MHz
Bandwidth	25KHz
Modulation	GMSK/FM
Data Rate	9600bps
Number of AIS transmitter	1
Number of AIS Receiver	2 channels: Channel A CH87B(161.975MHz) Channel B CH88B(162.025MHz)
Transmitting Power	2W
Rx Sensitivity	< -107 dBm @ 20% PER

SYSTEM CONNECTION



SIX MODES OF DISPLAY



Represented by:

Specifications subject to change without notice



ISO 9001
QMI-SAI Global

ComNav Marine Ltd.
#15-13511 Crestwood Place,
Richmond, British Columbia • Canada • V6V 2G1
Phone: 604-207-1600 • Fax: 604-207-8008
E-mail: sales@comnav.com

www.comnav.com
Worldwide Service
Printed in Canada

ComNav[®]