

2 in 1 Circuit Breaker / Disconnect Switch incorporates traditional battery disconnect switching (Non-engine) and circuit protection.

42 Max Vdc Rating easily supports 12, 24 and 36V systems. Ideal for trolling motor circuit switching applications.

Weatherproof Against Dust & Water Intrusion to ensure reliable circuit protection for the life of the electrical system installation

Ignition Protected safe for installation in closed compartments with potential explosive gases

Harsh Environment design with shock and vibration resistance ideal for marine and vehicle electrical systems.

SAE & ABYC Compliant ensures compliance to meet the needs for modern vehicle and vessel installations.



20-60 Amp Panel Mount Mini Circuit Breaker Switch



Protects Electrical Circuits from short circuit events and over-current loads, preventing wire insulation overheating and subsequent destruction.



Automatic Circuit Protection maintains electrical system safety and wire protection.

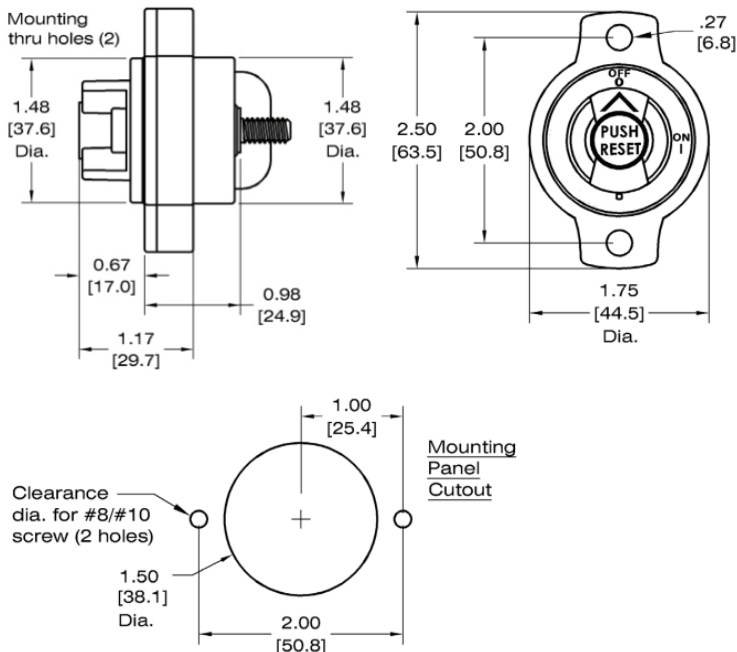


Bullet-proof Construction: Weatherproof, high temp materials for engine compartment applications, and solid mounting points.

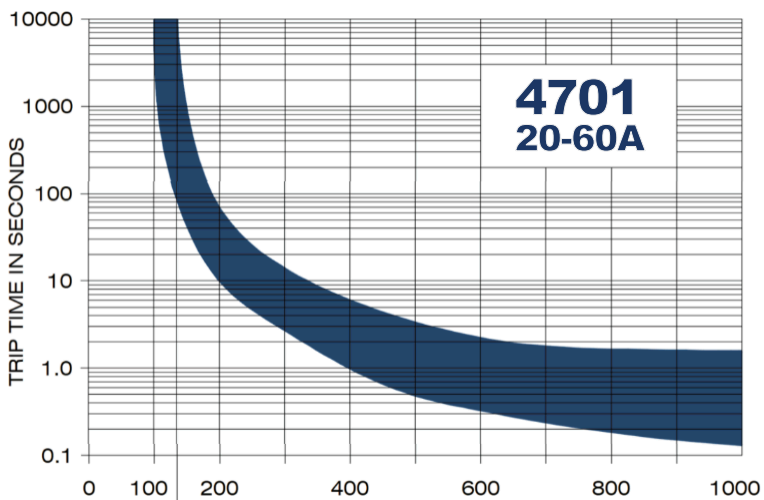


4 Year Industry Leading Warranty

Product Dimensions



Trip Current vs Time Delay



Temperature Correction Factor

Current Rating	°F	-65	0	32	77	100	140
	°C	-54	-17	0	25	38	60
10-60 Amps		.83	.87	.93	1.00	1.11	1.25

Electrical Specifications

Max Operational Voltage	42 Vdc
Minimum Trip	Must Hold 100% of rated current at 25°C/77°F
Maximum Trip	Must Trip at 135% of rated current within 1 hour.
Voltage Drop	Max .8V at rated current
Dielectric Strength	2000 VAC *UL 1077
Endurance Cycle (Switching)	10-25A 5k, 30-45A 4k, 50-60A 3k
Interrupt Capacity 14VDC	3kA/U3 per ABYC (SAE J553 & UL1077*)
Interrupt Capacity 28VDC	1.5kA/U3 per ABYC (SAE J553 & UL1077)
Dielectric Strength	2000VAC
Push-To-Reset	Trip-Free Cycling

Specifications

Max Operating Temperature	60 C / 140 F
Min Operating Temperature	-40 C / -40 F
Weight	3.75oz (90g)
Mounting Nut Size	#8-32
Hardware Stud Material	Stainless Steel
Terminal Stud Size	1/4-28
Max Terminal Stud Torque	25 in-lbs (2.8 N-m)
Cable Terminal Stud Hole Size	1/4" (M6) Nominal
Ignition Protection	ISO 8846, USCG, ABYC, UL1107, UL1500 and SAE J1171
Humidity Compliance	MIL-STD-202, Method 106 (240 hrs)
Ingress Protection	IP66 / IP67 (Flush Mount)
Mechanical Vibration	UL1107 at 100% rated current
Mechanical Shock	UL1107 at 100% rated current
Compliance	SAE J553, ABYC-E-11, UL 1500, MIL-STD-202, UL 1077, SAE J1428, IEC 60529
RoHs Compliant?	Yes
CE Marked?	Yes

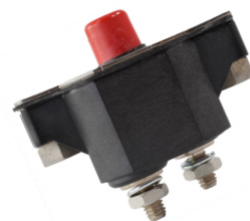
Part Numbers

	Retail Pack	Bulk Pack
Mini Breaker Disconnect Switch, 20 A, Pnl Mt	4701-20	4701-20B
Mini Breaker Disconnect Switch, 30 A, Pnl Mt	4701-30	4701-30B
Mini Breaker Disconnect Switch, 40 A, Pnl Mt	4701-40	4701-40B
Mini Breaker Disconnect Switch, 50 A, Pnl Mt	4701-50	4701-50B
Mini Breaker Disconnect Switch, 60 A, Pnl Mt	4701-60	4701-60B

Related Circuit Protection Options



4706 Series
25A-150A



4712 MD
15A-60A



www.egismobile.com
360.768.1211
Bellingham, WA U.S.A

